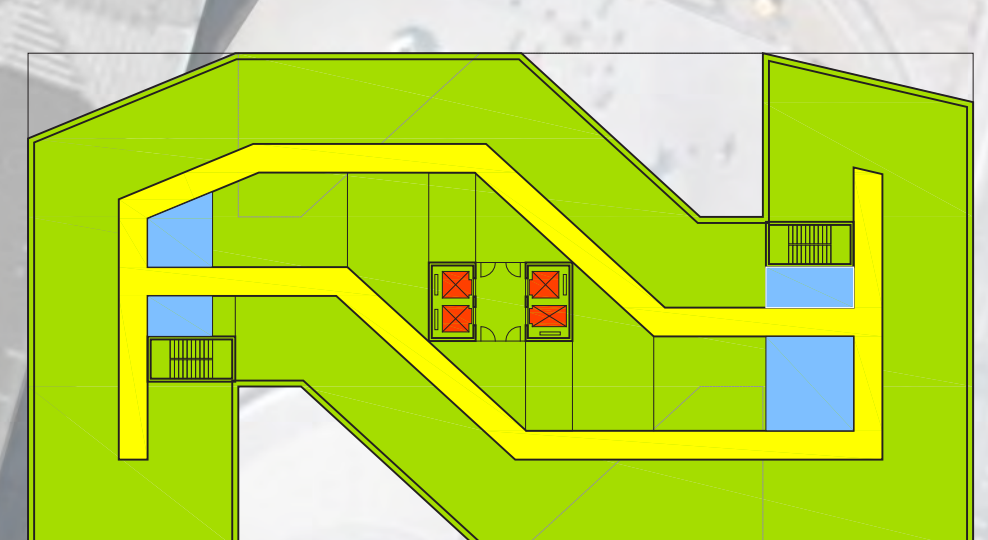


WETTBEWERB NEUBAU RATHAUSSTRASSE 1 WIEN



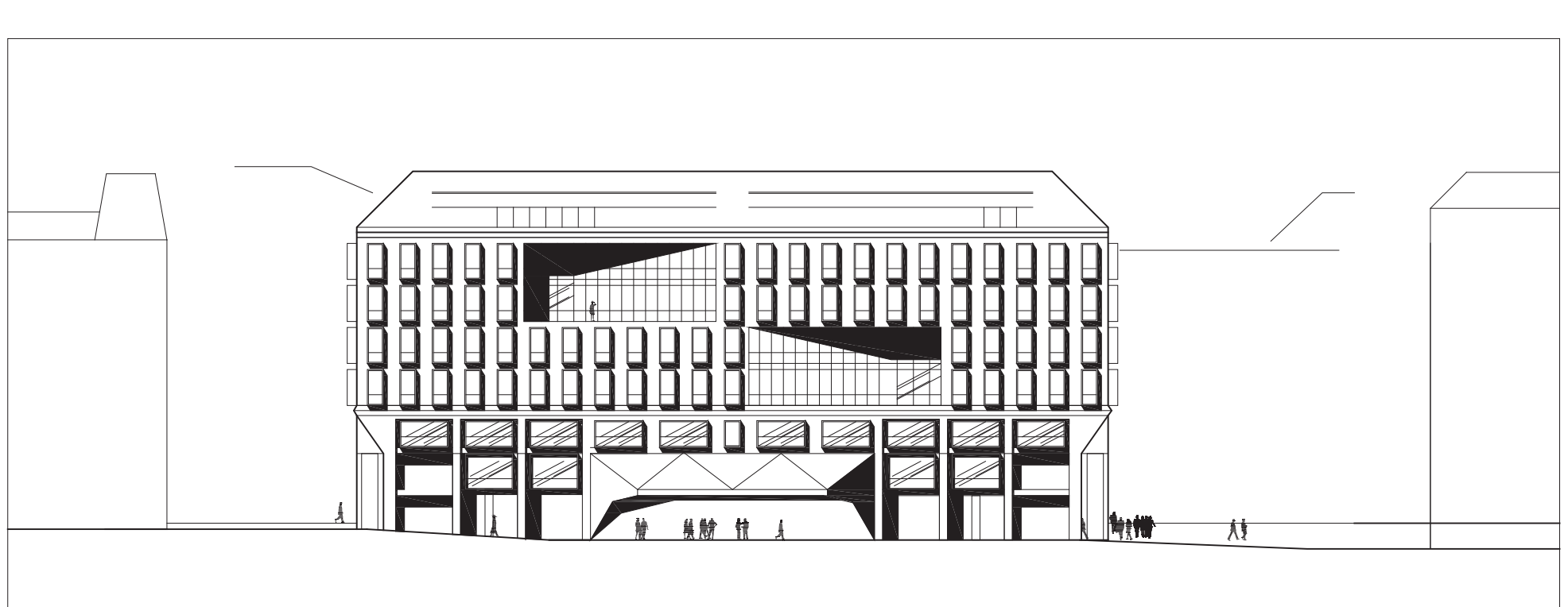
DG 1575qm



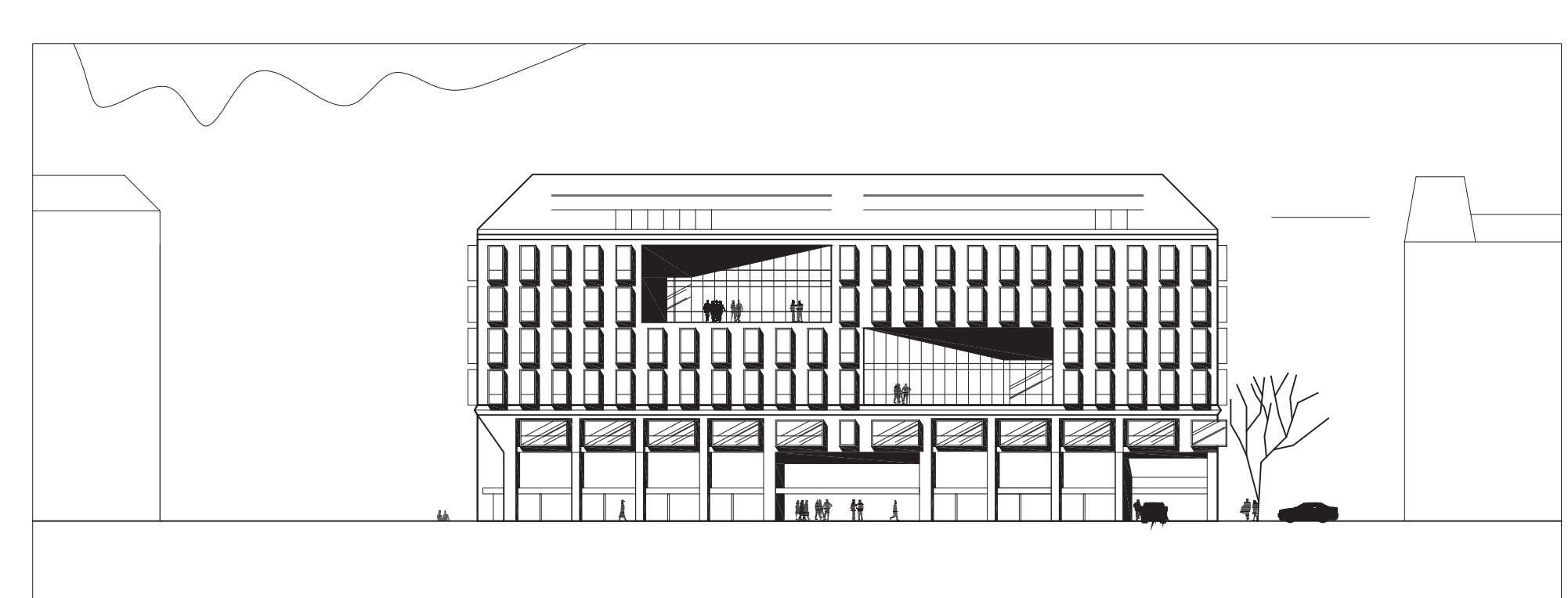
OG 4-5 1775qm

Lageplan M 1:1000

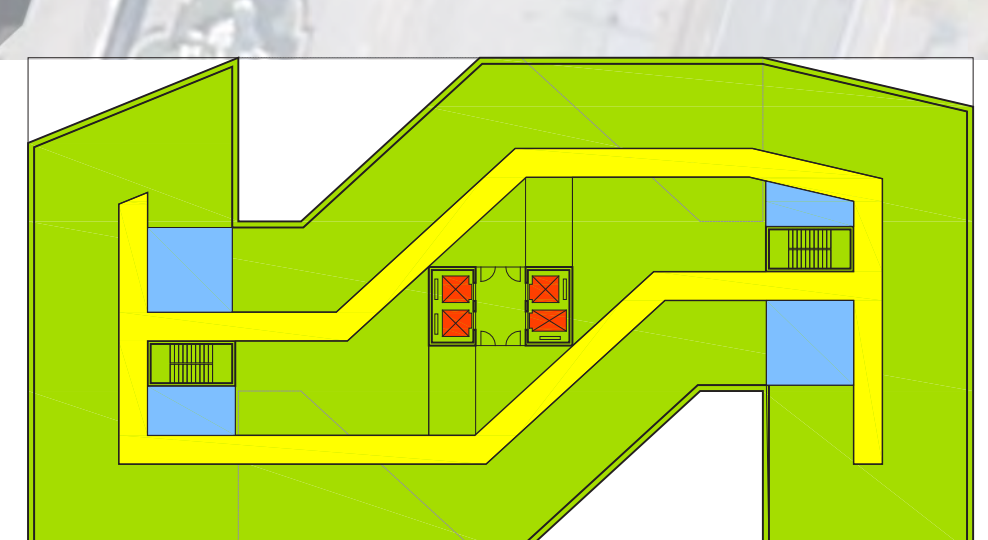
Blickpunkte



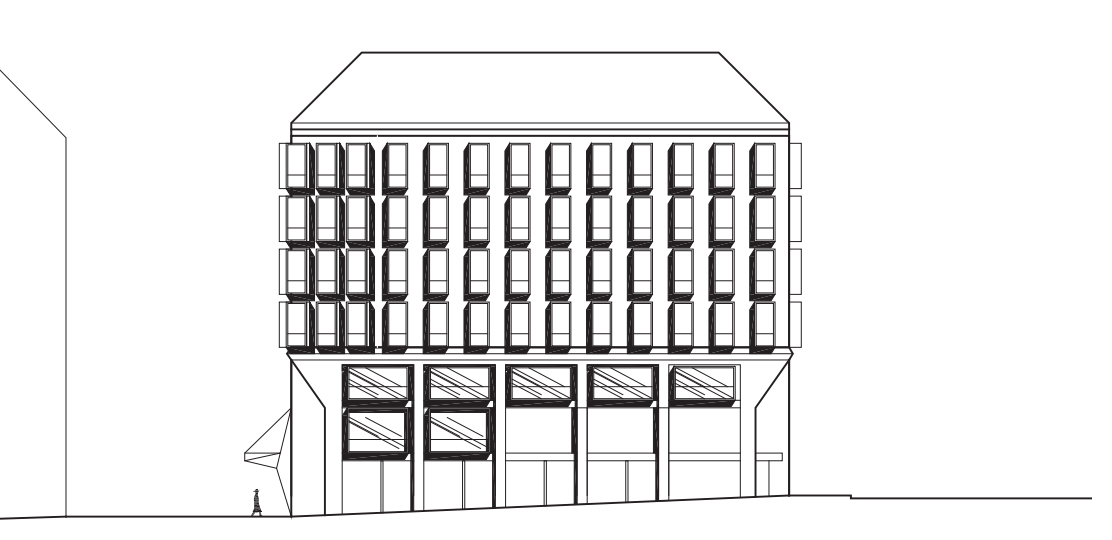
Ansicht Ost M 1:500



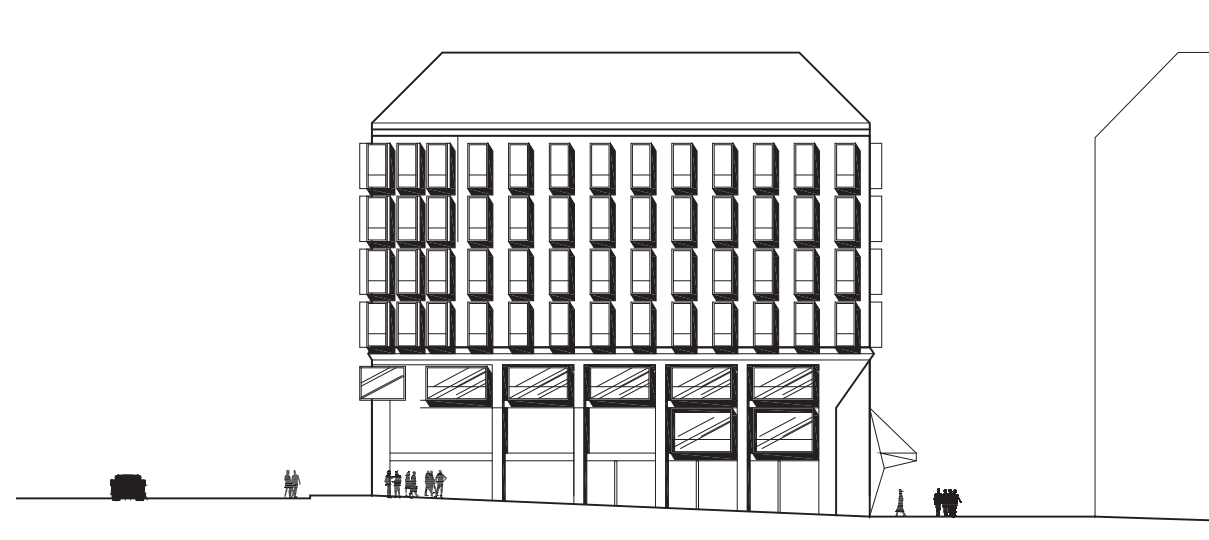
Ansicht West M 1:500



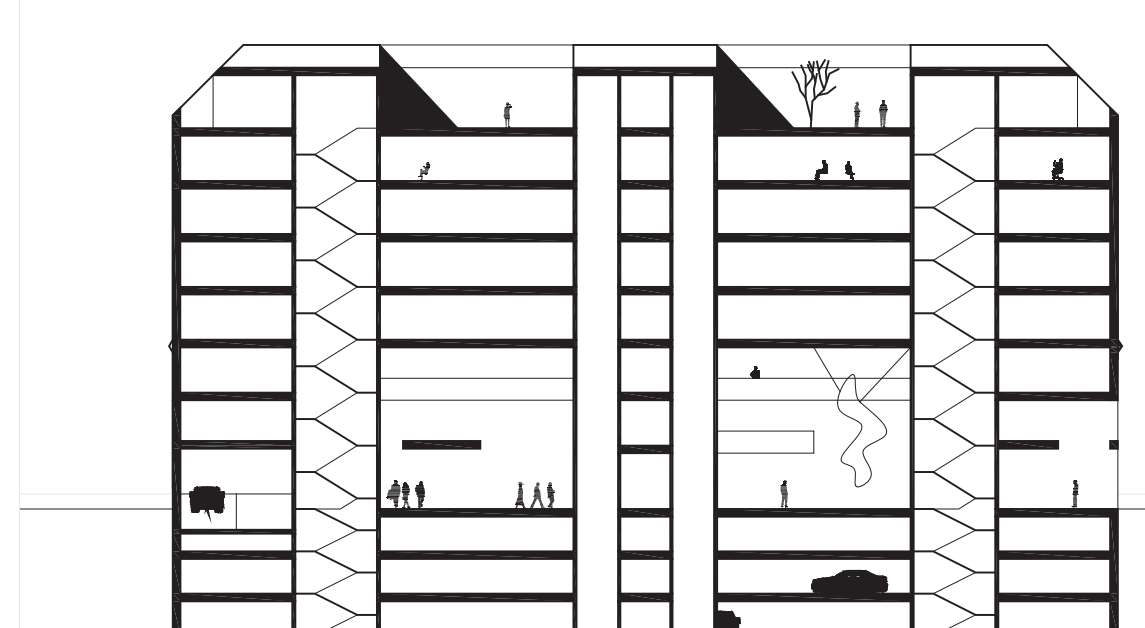
OG 2-3 1775qm



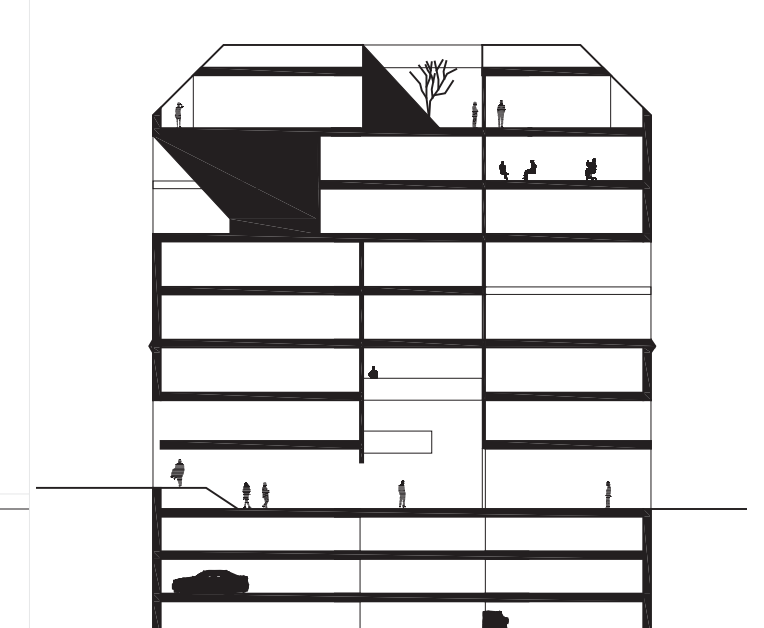
Ansicht Nord M 1:500



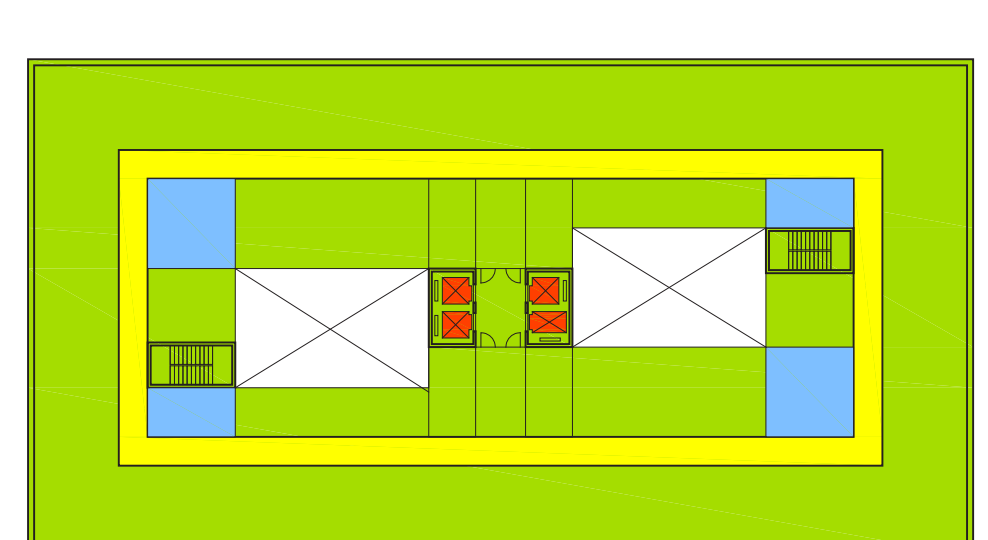
Ansicht Süd M 1:500



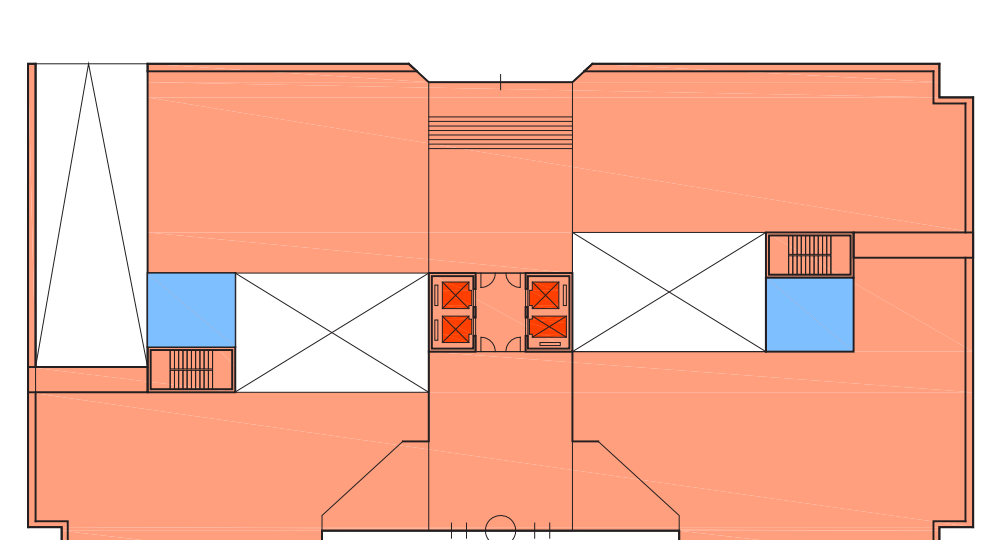
Längsschnitt M 1:500



Querschnitt M 1:500

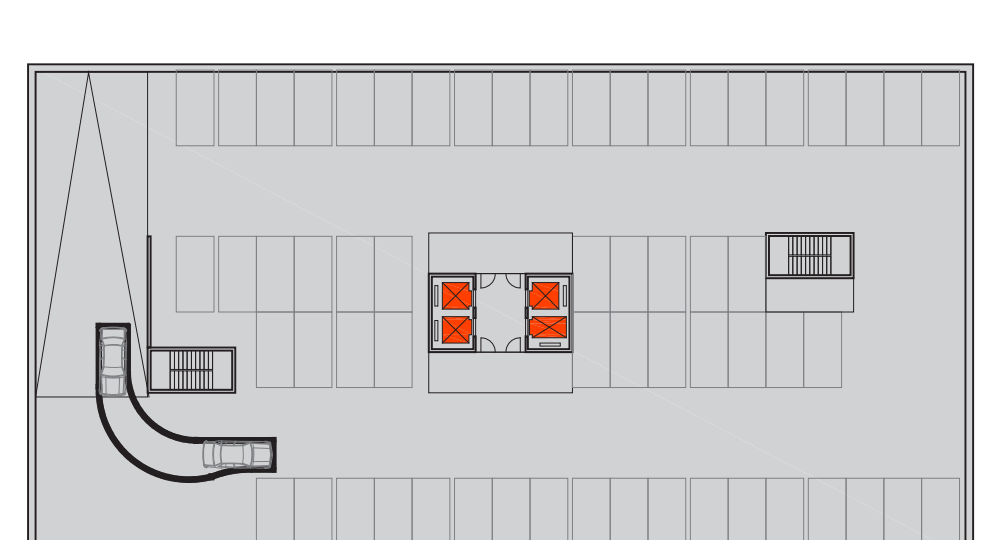


OG 1 1853qm

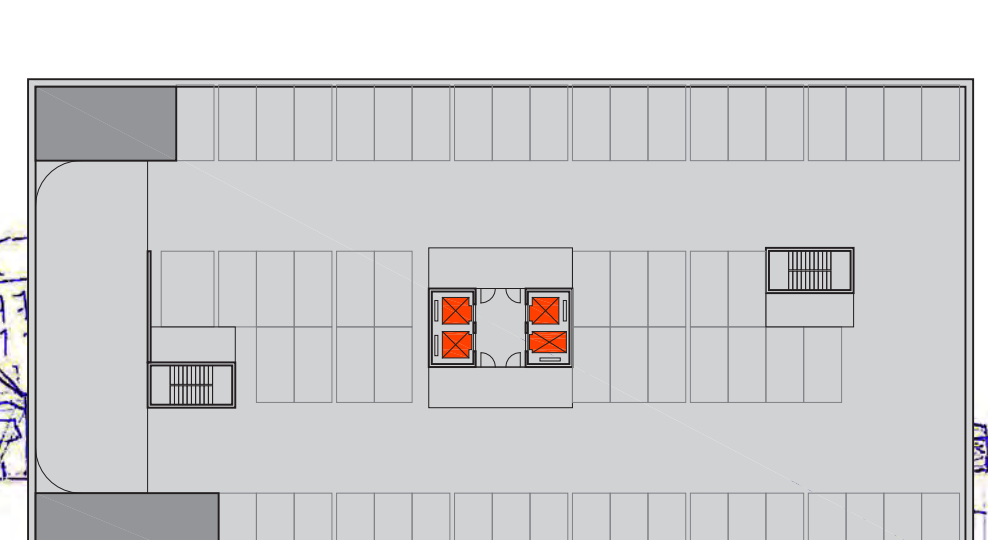


EG 1630qm

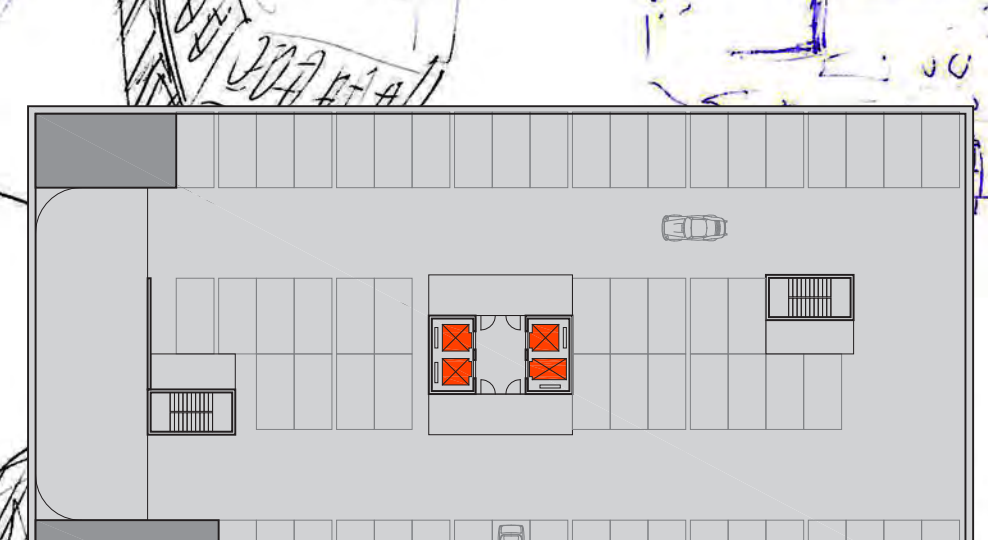
Grundrisse M 1:500



UG1



UG2



UG3

